



UNIVERSITY
OF
LOUISIANA
L a f a y e t t e™

Office of **TRANSPORTATION SERVICES**

ORIENTATION

PARK WITH US

Types of Permit

- Residential Students
- Student Aides
- Commuter Students
- Night Students

Permit Required Campus

- All vehicles must have a permit to park on campus
- Student parking permits must be purchased each semester

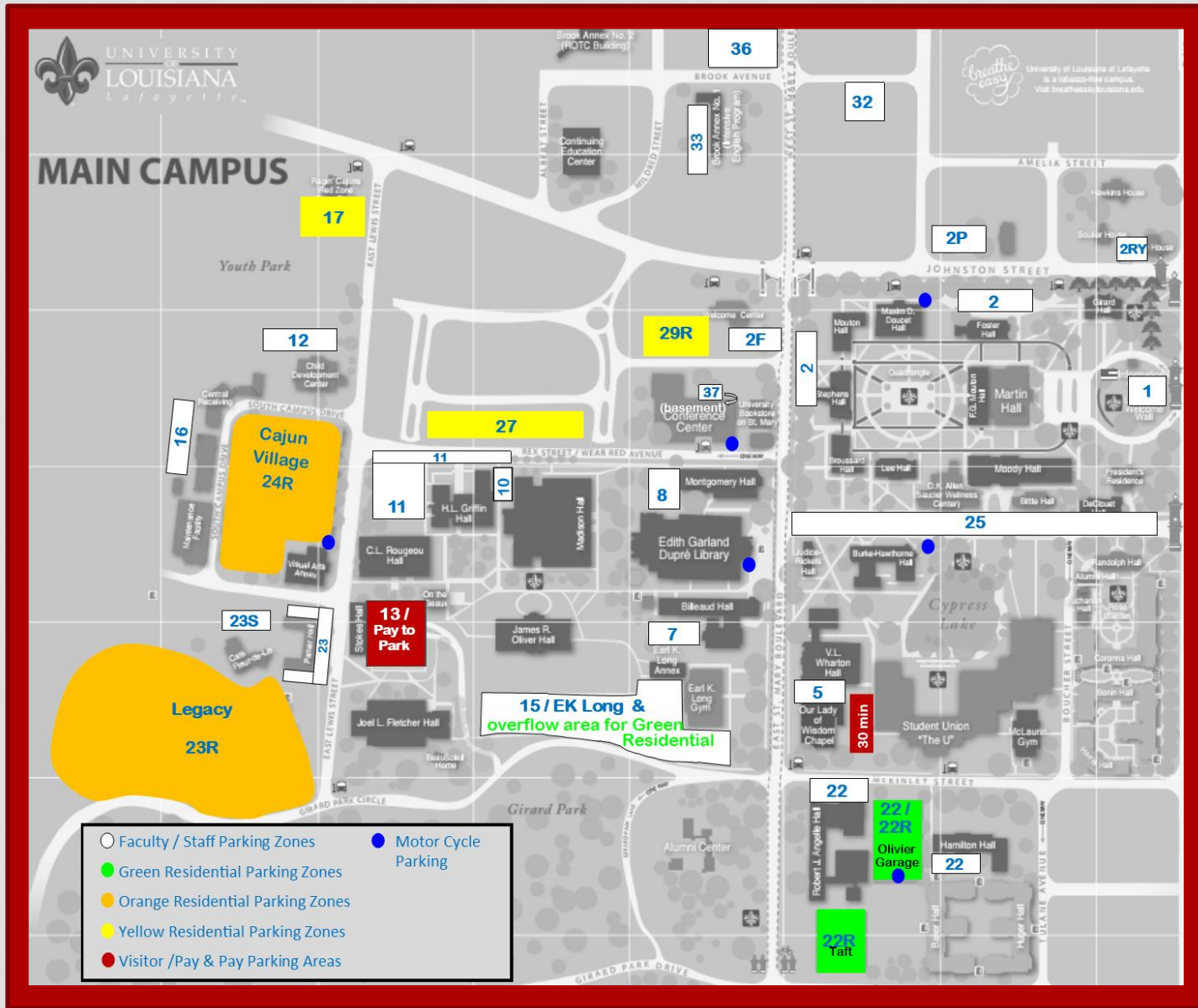
Virtual Permits

- LPR (License Plate Recognition)
 - No decals
 - No hangtags
- Vehicle Registration
 - Is it an O or a 0?
 - No spaces or dashes

FALL 2017 SEMESTER

- **Fall 2017 Parking Permits – all types**
 - Available for purchase in early to mid-July
- **Purchasing Options**
 - Online via ULink
 - Details instructions will be posted at park.louisiana.edu
 - In Person
 - Our office is in the Olivier Parking Tower located at 619 McKinley Street
- **You Will Need:**
 - Student ID
 - Vehicle Registration
 - Payment
 - Online - Debit/Credit card only
 - In Person – debit/credit card, money order in exact amount or Cajun Cash

RESIDENTIAL PARKING



COMMUTER PARKING AREAS

- **Girard Park Circle Parking Garage**

- Floors 1 – 2: Visitor/Pay Parking
 - Electronic Pay Stations located on each floor
 - Park & Pay with credit/debit card
 - \$5 for first 2 hours
 - \$1 per hour thereafter
 - Option: extend by cell phone at hourly rate
- Floors 3 – 6: Permit only
 - \$300 per semester (2017-2018)

- **Cajun Field**

- Permit required
- No charge
- Buses provide transportation to campus with drop off on Rex Street



NIGHT PERMITS

- **Parking Available:**
 - Non-Gated Areas – after 3:00pm
 - Includes Zones 15, 2F, Hebrard Street, etc.
 - Does NOT include the residential zones
 - Gated Areas – after 4:30pm
 - Most gates will go up but a few will not
- **Permit Price - \$25/semester**

ENFORCEMENT

- **We enforce parking regulations even when class is not in session. Review the Traffic Code for all parking rules.**
- **Hours of enforcement are 7:00 am – 9:00 pm, Monday through Friday.**



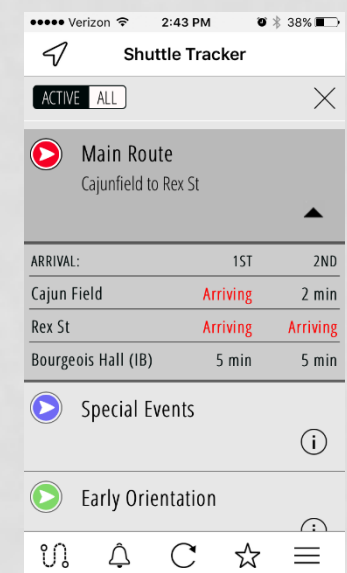
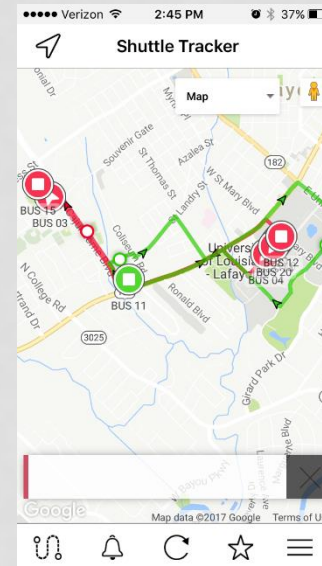
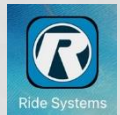
CAJUN FIELD PARK AND RIDE

Transit Schedule

- Fall /Spring Semesters
 - Monday – Thursday
 - 7:00 am – 7:00 pm
 - Friday
 - 7:00 am – 5:00 pm
- Bus stops located at Cajun Field, Bourgeois Hall, Student Union and Rex Street at the Conference Center.
- Transit service is not available when the University is not in session.

There's an app for that!

- Ride Systems
 - iOS and Android app
 - Provides live bus tracking and ETA to bus stops



NIGHT SHUTTLE

On-Demand Shuttle Service

- Runs between Bourgeois Hall and main campus
- Between select buildings on main campus.
- Call to request
 - 482-5305
- park.louisiana.edu/transit-information/night-shuttle

Night Shuttle Schedule

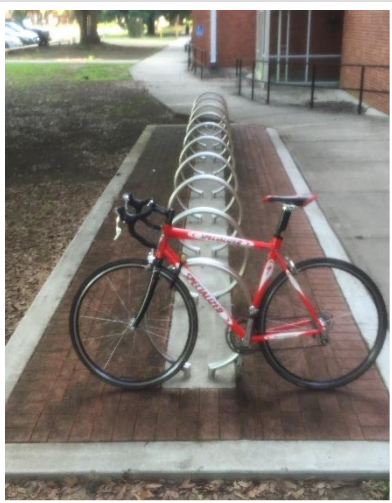
- Monday - Thursday
 - 7:00 – 11:45 pm
- Friday
 - 5:00 – 11:45 pm
- Saturday and Sunday
 - 12 noon to 11:45 pm
- Call dispatcher at 337-482-5302

BIKES!

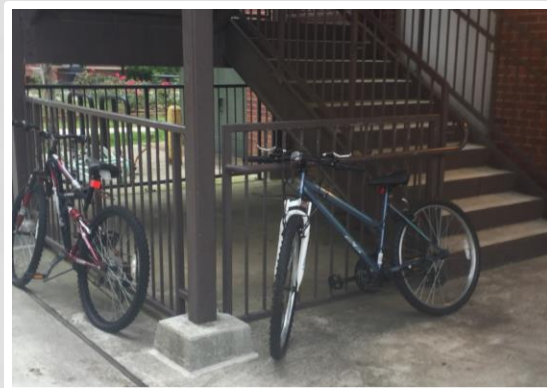
- Bike Parking

- Lock bikes to bike racks only
- Bikes may be impounded if locked improperly
- Keep a record of your bike: picture, brand, color & serial number.

Correct

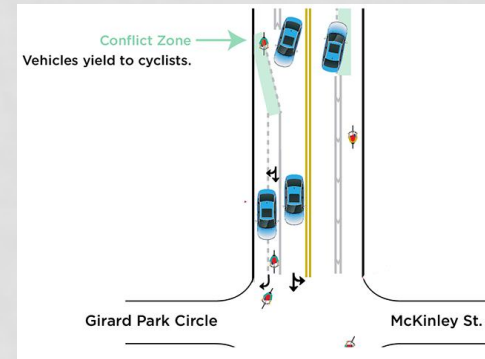


Not correct



- Bike Safety

- Rules of the Road



- Ride with traffic, not against
- Ride defensively

TRAFFIC CODE

“Popular” Violations:

1. NOT REGISTERED - A parking permit is required every semester.
2. PLATE NOT VISIBLE - All license plates must be readable from the traffic aisle.



The Traffic Code is available online at park.Louisiana.edu/parking

SAMPLE OF CITATIONS AND FINES

No Parking Area	\$35.00
Blocking Driveway	\$35.00
No Parking on Grass	\$35.00
Overtime Parking	\$35.00
Disobeying Attendant/Officer/Parking Enforcement	\$35.00
Not Registered for Daytime Parking	\$35.00
Parking Not to Obstruct Traffic	\$35.00
No Parking Zone	\$35.00
Improper Parking	\$35.00
Backing into Stall/Illegal Parking	\$35.00
Pay By Space Violation	\$35.00
Not Registered	\$50.00
Wrong Zone	\$50.00
No Parking Tow Away Zone	\$50.00
No Parking in Maintenance/Reserve Space	\$50.00
No Parking in Fire Lane	\$100.00
Blocking Access to Handicap Space	\$100.00
Immobilizer	\$100.00
Relocation Fee	\$100.00
Remove/Tamper with Immobilizer	\$200.00
Handicapped Parking	\$300.00

Complete list of violations available at park.louisiana.edu/traffic code

I RECEIVED A CITATION... NOW WHAT?

- If you have a permit?
 - Come talk to us to confirm your information is correct in system
- Did you park correctly?
 - Check the Traffic Code for your violation
- Appeals
 - 4 class days
 - Online only
 - 1st and 2nd level of appeals
- A hold is placed on university account until fine is paid or appeal approved.
- Holds can prevent registration, class drops/adds and viewing grades

WHERE NOT TO PARK



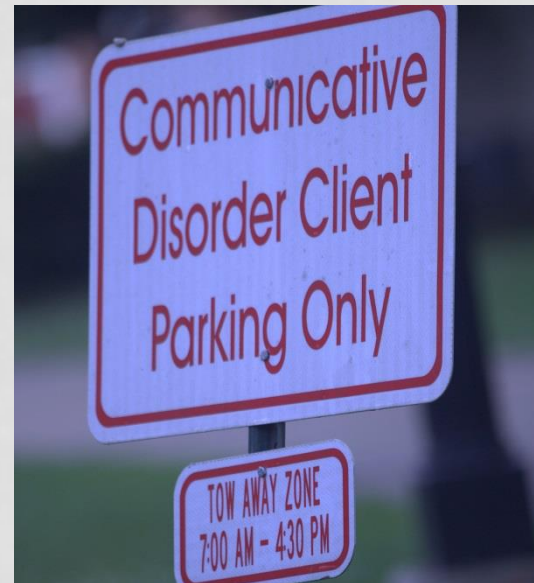
- Zone specific parking
- Tow Away Zone
- After hours parking



- DO NOT park in handicapped parking spaces without the proper permit



- Non university parking areas on campus



- Pay attention to signs reserving spaces for special groups or individuals

NOW HIRING! BUS DRIVERS

If interested, go to

park.louisiana.edu/transit-information

Click on Student Driver Job Application for a job description, qualifications and an online application.

CONTACT INFO

Office: Olivier Parking Tower, 619 McKinley Street,
Suite 100

Phone: (337)482-6858



[Office of Transportation Services](#)



[@GeauxPark](#)

[@GeauxBus](#)

[@GeauxBike](#)



[park.louisiana.edu](#)

This presentation is
available at
<https://orientation.louisiana.edu/parents/helpful-resources>